



Irving Klaw (1911-1970)  
"The King of Pinup" &  
Bettie Page

## Free access to:

[Photos by Irving Klaw](#)

[Irving Klaw's Nutrix catalogs](#)

[Photos of Bettie Page](#)

[Other vintage photos](#)

[Japanese bondage photos](#)

[Bonus fetish photos](#)

[Download PDF](#)

enjoy!

Irvingklaw.com contains adult material and is for use only by persons 18 years of age or older. © 2009 IrvingKlaw.com All rights reserved.

## KLAW PHOTOS

PAGE 1

1 - 2 - 3 - 4 - 5



Autumn



Blaze Star



Desiree



Dolly



Donna Brown



Donna Christie



Dorian Dennis



Jade



Joan Rydell



Lili St. Cyr



Pat Hobson



Simone



During the late 1930's, Irving Klaw (1911-1970) and his sister Paula Kramer (b. ?) established a small shop on 14th Street in New York city where they sold newspapers, magazines and photos. They discovered that European photos of women in high-heeled shoes or long sleeved gloves and stockings sold well.

Irving and Paula soon set up their own studio and began producing similar photos. By the late 1940's Irving and Paula were photographing burlesque dancers (Tempest Storm, Lili St. Cyr, Blaze Star), all-female wrestling scenes and women posing in risqué lingerie.

Irvingklaw.com contains adult material and is for use only by persons 18 years of age or older. © 2009 IrvingKlaw.com All rights reserved.

## NUTRIX CATALOGS



Irvingklaw.com contains adult material and is for use only by persons 18 years of age or older. © 2009 IrvingKlaw.com All rights reserved.

## BETTIE PAGE

PAGE 1

[1](#) - [2](#) - [3](#) - [4](#)



Irvingklaw.com contains adult material and is for use only by persons 18 years of age or older. © 2009 IrvingKlaw.com All rights reserved.

## House of Milan?

PAGE 1

[1](#) - [2](#) - [3](#)



Irvingklaw.com contains adult material and is for use only by persons 18 years of age or older. © 2009 IrvingKlaw.com All rights reserved.

## JAPANESE BONDAGE

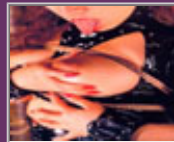
PAGE 1

[1](#) - [2](#) - [3](#) - [4](#)



Irvingklaw.com contains adult material and is for use only by persons 18 years of age or older. © 2009 IrvingKlaw.com All rights reserved.

## FETISH PHOTOS



Irvingklaw.com contains adult material and is for use only by persons 18 years of age or older. © 2009 IrvingKlaw.com All rights reserved.

**HOME****KLAW PIX****NUTRIX****BETTY PAGE****VINTAGE****JAPANESE****FETISH**

Irving Klaw (1911-1970)  
"The King of Pinup" &  
Bettie Page

In the late 1930's, **Irving Klaw** (1911-1970) and his sister Paula Kramer established a small shop on 14th Street in New York where they sold newspapers, magazines and photos. They discovered that photos of women in high-heeled shoes or long sleeved gloves and stockings sold well. Irving and Paula produced some of the first fetish material in North America. Tame by today's standards, but at the time it was very racy and pushed the limits of public acceptability. **Irving Klaw** and Paula Kramer set up their own photo studio and began taking still and moving pictures. By the late 1940's **Irving Klaw** and Paula Kramer were photographing burlesque dancers (Tempest Storm, Lili St. Cyr, Blaze Star), all-female wrestling scenes and women posing in risqué lingerie. **Irving Klaw** and Paula Kramer also began distributing cartoons depicting bound damsels in distress (drawn by Eric Stanton, John Willie). The photos of women in their underwear and the bondage cartoons were so popular that they decided to photograph both together.

#### **Always free access to:**

- Photos by Irving Klaw**
- Irving Klaw's Nutrix catalogs**
- Photos of Bettie Page**
- Other Vintage photos**
- Japanese bondage photos**
- Bonus fetish photos**



Irvingklaw.com contains adult material and is for use only by persons 18 years of age or older. © 2003-2006 IrvingKlaw.com All rights reserved.